

User's Manual

Carbon Monoxide Detector

Introduction

Thank you for purchasing carbon monoxide alarm. This is one Single Station alarm. Please take a few minutes to thoroughly read this user's guide and save for future reference.

Features/Specification

Features:

- Loud 85 decibel alarm.
- Permanent carbon monoxide sensor.
- Powered by 3 x 1.5V AA batteries.
- The alarm sound pattern is: four short alarm beeps. The red LED will flash while in alarm mode.
- One chirp every 30 seconds is an indication that the battery is low (need replacement) (green LED still flashes once every 30 seconds) or the unit is malfunctioning (green LED is out).
- Alarm memory feature: If the unit ever alarms, pressing the button, green LED will flash once every second for one minutes and the peak alarm level will indicate on the LCD.
- Test/Reset button to test the unit electronics and verifies proper unit operational and reset the unit during CO alarm.
- Green and red LED lights that indicate normal operation and alarm status.
- 3 digit LCD display is optional. 'Er' on the LCD to indicate the unit is malfunctioning. 'Lb' on the LCD to indicate it low battery and need replacement. '999PPM'

on the LCD to indicate CO level over 999ppm. If the CO leakage is less than this level, it would show its actual concentration.

- The unit will sound 'chirp' and red LED flashes once as power up.
- Power saving feature: The alarm sound pattern is 4 beeps every 5 seconds for the first 4 minutes. In 4 minutes, it will change to 4 beeps every minute to save the battery.

Green LED: The green LED flashes every 30 seconds to indicate the unit is operating properly.

Red LED: When a dangerous level of carbon monoxide is detected the red LED will flash and the alarm pattern will sound.

The CARBON MONOXIDE (CO) alarm monitors the air for the presence of CO. The alarm will sound and be accompanied by the flashing red LED light when there are high levels of CO present.

CAUTION: This alarm will only indicate the presence of present at other area.

Specification:

- Power Supply: 3 AA size 1.5V batteries
- Sensitivity & Time: 50ppm, alarms within 60-90 minutes
- 100ppm, alarms within 10-40 minutes
- 300ppm, alarms within 3 minutes
- Standby Current: <50uA (without LCD); <200uA (with LCD)
- Alarm Current: <75mA
- Operation Ambient Condition: 5-40°C, 20-90%RH.

Installation Instructions

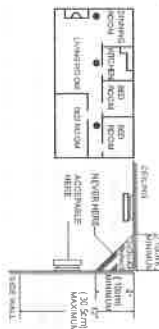
Step 1

Installation Guide:

IMPORTANT: THIS ALARM MUST BE MOUNTED ON A WALL. INSTALL ONLY AS DETAILED!

A. Recommended Installation Locations:

We recommend the installation of a CO Alarm in the following locations:



For maximum protection we suggest an alarm be installed on each level of a multilevel home including every bedroom, hallway, finished attics and basements. Put alarm at both ends of bedroom hallway or large room if hallway or room is more than 30ft.(9.1m) long. If you have only one alarm, ensure it is placed in the hallway outside of the main sleeping area, or in the main bedroom. Verify the alarm can be heard in all sleeping areas. Locate an alarm in every room where someone sleeps with the door closed. The closed door may prevent the alarm from waking the sleeper. Mounting the alarm on the ceiling in the center of the room places it closest to all points in the room. Ceiling mounting is preferred in ordinary residential construction. When mounting an alarm on the ceiling, locate it at a minimum of 4" (10cm) from the side wall (see Diagram A), if installing the alarm on the wall, at a minimum of 4" (10cm) and a maximum of 12" (30.5cm) below the ceiling (see Diagram below).

B. Where Not to Install:

- Do not install in garages, kitchens, furnace rooms or bathrooms. **INSTALL AT LEAST 15 FEET AWAY FROM ANY FUEL BURNING APPLIANCE.**
- Do not install within 3ft(0.9m) of the following: The door to a kitchen, or a bathroom that contains a tub or shower, forced air ducts used for heating or cooling, ceiling or whole house ventilating fans, or other high air-flow areas. Avoid excessively dusty, dirty or greasy areas. Dust, grease or household chemicals contaminate the alarm's sensors, causing it to not operate properly.
- Place the alarm where drapes or other objects will not block the sensor. CO must be able to reach the sensors to accurately detect these conditions. Do not install in peaks of vaulted ceiling, A frame ceilings or gabled roofs. Keep out of damp and humid areas.
- Install at least one foot away from fluorescent lights, electronic noise may cause nuisance alarms. Extreme temperatures will affect the sensitivity of the CO Alarm. Do not install in areas where the temperature is colder than 40 degrees Fahrenheit (4.4 Celsius) or hotter than 100 degrees Fahrenheit (37.8 Celsius). Place away from doors and windows that open to the outside.

Step 2

Mounting Instructions:

1. Remove the mounting bracket from the back of the alarm by twisting the alarm.
2. After selecting the proper location for your CO Alarm, drilling two \varnothing 5.0mm holes in the ceiling or wall vertically with the distance of 60mm and inserting one plastic insert into the holes, then attaching the bracket to the plastic insert with the arrow down to the ground and screwing tightly two screws in the two inserts.
3. Matching the arrow on the back of the alarm with the arrow on the bracket to snap the alarm on the bracket by twisting the alarm